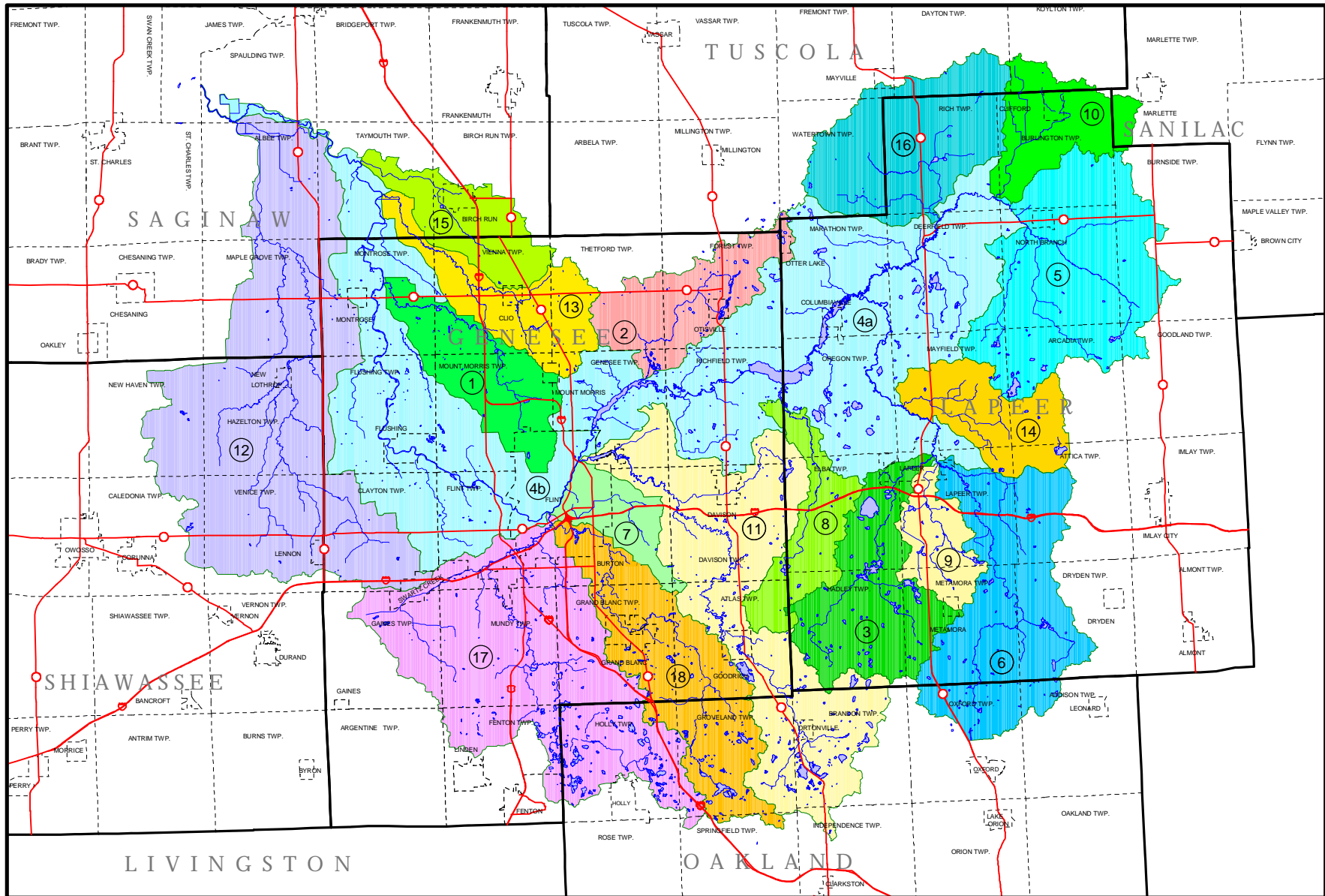


FLINT RIVER WATERSHED



SOURCES:
 -Michigan Department of Natural Resources,
 Michigan Resource Information System, 1978
 -Michigan Department of Environmental Quality

SUBWATERSHEDS OF THE FLINT RIVER WATERSHED

- | | | | | |
|----------------------------|----------------------------------------------------------------------------|----------------------------|-----------------|--------------|
| Federal and State Highways | Butternut Creek | Flint River - South Branch | Kearsley Creek | Squaw Creek |
| Municipal Boundaries | Farmers Creek | Gilkey Creek | Mistuguay Creek | Swartz Creek |
| Surface Water | Hasler Creek | Hunters Creek | Pine Run | Thread Creek |
| Rivers and Streams | Flint River-Upper Main Channel (4a)
Flint River-Lower Main Channel (4b) | Indian Creek | Plum Creek | |
| | Flint River - North Branch | Silver Creek | | |

